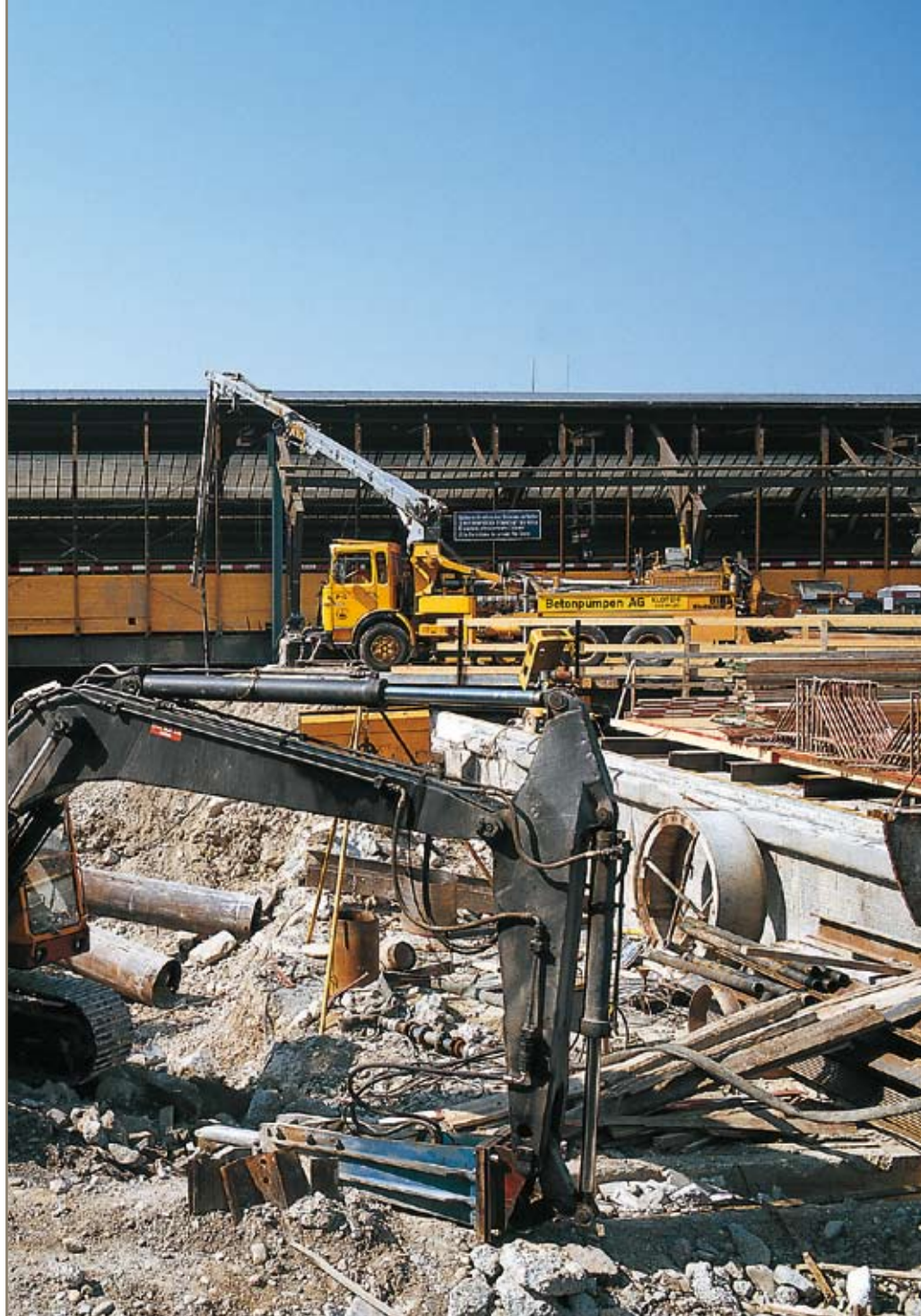




aerospace
climate control
electromechanical
filtration
fluid & gas handling
hydraulics
pneumatics
process control
sealing & shielding



Cardan Couplings



ENGINEERING YOUR SUCCESS.

I – Cardan Couplings

Working pressure

ND	bar	psi
50	20	300
70	20	300
89	15	217
108	15	217
133	10	150
159	10	150

Working temperature

-40 °C (-40 °F) up to +80 °C (+176 °F)

Hose, coupling, assembly method and seal must be chosen in relation with the desired application and temperature range.

Material

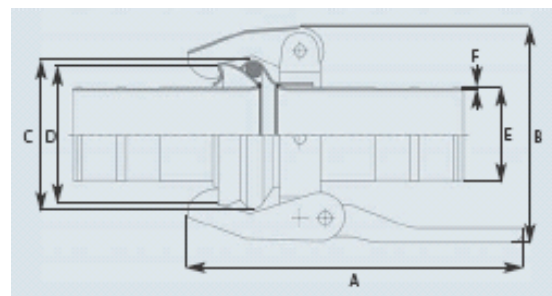
– Galvanized carbon steel

Features

- Heavy duty quick couplings used in agricultural, irrigation, cleaning and construction applications. They are most commonly used with systems carrying water, liquid fertilizer, bulk products, etc.
- Machined extra-thick wall on hose shank, for long service life
- The seal between the male and female part, allows a deflection of +/- 15°
- Cardan couplings are not interchangeable with “BAUER” couplings

Dimensions

ND	A mm	B mm	C mm	D mm	E mm	F mm
50	230	128	85	76	51	2,6
70	270	163	108	103	63	3,6
89	310	194	136	133	76,1	2,9
108	360	232	161	154	101,6	3,6
133	370	264	188	179	127	4,0
159	370	313	223	210	152,4	4,0



Cardan Couplings

Material: **Steel**
 For hose type: **CEMENT, IDRO, WATER, FUCINO, BEVERA**

Assembly:

Safety Clamps	Worm Drive	Bolt clamps	Crimping
		X	

Female



Steel (AISI 304 - 1.4301)

Part-No.	Hose I.D. mm	Weight kg/pcs
KMS050	50	1,13
KMS063	63	1,89
KMS075	75	3,19
KMS100	100	5,06
KMS125	125	8,01
KMS150	150	9,11

Male Seal included



Steel (AISI 304 - 1.4301)

Part-No.	Hose I.D. mm	Weight kg/pcs
KVS050	50	0,48
KVS063	63	0,88
KVS075	75	1,62
KVS100	100	2,19
KVS125	125	3,62
KVS150	150	4,30

O-RING SEAL



SBR (Styrene Butadiene Rubber)

Part-No.	O.D. Ø mm	I.D. Ø mm	Height mm	Weight kg/pcs
KX050	86,0	64,0	11,0	0,03
KX063	110,0	87,0	11,5	0,04
KX075	140,0	112,0	14,0	0,08
KX100	160,0	124,0	18,0	0,15
KX125	190,0	146,0	22,0	0,27
KX150	220,0	180,0	20,0	0,26